

# PUBLIC AUCTION

**SURPLUS ASSETS TO THE ONGOING OPERATIONS OF  
A HIGH PRECISION MANUFACTURER**

**NOVEMBER**

**12**  
2013

**TUESDAY**  
10:30 AM PT

**ONSITE & ONLINE AUCTION**

ONLINE BIDDING AVAILABLE  
**BidSpotter.com**

**FEATURING: 5" Hyundai-Kia KBN-135 5-Axis CNC Table-Type Horizontal Boring Mill • Honor Seiki VL160C VTL • Haas EC-1600 4-Axis HMC w/5-Axis Trunnion Table • Haas EC-3000 CNC HMC • Mori Seiki SH-403 CNC 4-Axis HMC • Mighty Viper B3000 CNC Bridge Type Machining Center • Mighty Viper VMC-1600 NC VMC • Mighty Viper VMC-1500 CNC VMC • Mighty Viper VMC-850 CNC VMC • (2) Mazak AJV 35/80 CNC VMCs • Mazak AJV 35/60 CNC VMC • Plus (4) Haas Rotary Tables • (2) Tsudakoma Tables • Large Selection of Manual Equipment • Grinders • Tombstones • Tooling • Transformers • Aluminum Scrap and Lots More**



5.3" HYUNDAI KIA KBN-135 CNC HORIZONTAL BORING MILL



62.9" HONOR SEIKI VL-160C VERTICAL TURRET LATHE



HAAS EC-3000 HORIZONTAL MACHINING CENTER



MIGHTY VIPER B3000 BRIDGE MILL

**LOCATION:** 240 E. Rosecrans Ave., Gardena, CA 90248 • **INSPECTION:** Monday, November 11, 9:00am to 4:00pm ET

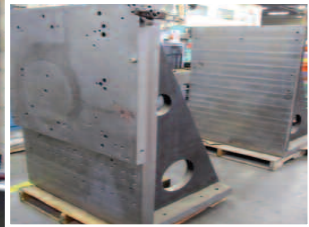


**For More Information and Complete Photo Gallery go to:**  
**www.machinerynetworkauctions.com** or call Gary at 888-998-4440  
**email: info@machinerynetworkauctions.com**



# HORIZONTAL BORING MILL

Installed 2012

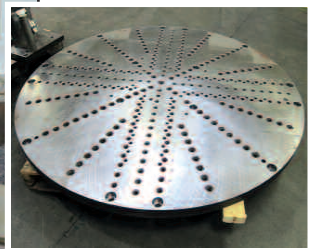


**5.3" Hyundai Kia KBN-135 CNC Table-Type, 5 Axis, Fanuc 16iM Control, 118" x 79" x 63" x 28", Table 79" x 71", B-Axis, Part Probe, 90ATC, CT-50, 2,000 RPM, Chip Conveyor, 2008 (Installed New 2012), S/N G3216-0264**

**Low Hours**

# VERTICAL TURRET LATHE

2012



**62.9" Honor Seiki VL-160C, Fanuc OiT Control, 78.7" Swing, 78" Turning Diameter, 75 HP, 12 ATC, CC, 250 RPM, 2012, S/N 79071**

**Low Hours**

**THIS BROCHURE IS ONLY A PARTIAL LISTING.**



# HORIZONTAL MACHINING CENTERS

2006



HAAS EC-3000 HORIZONTAL MACHINING CENTER

2007



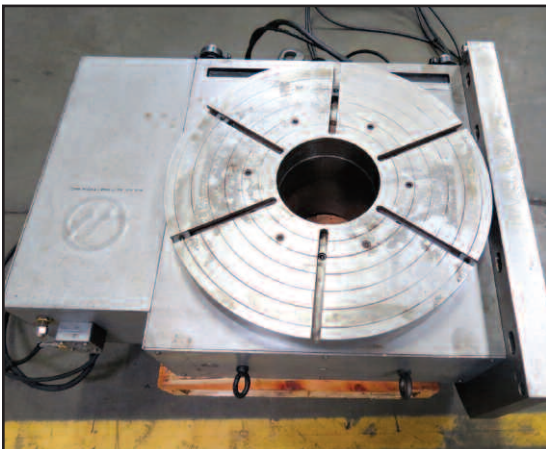
**Trunnion Table**

HAAS EC-1600 HORIZONTAL MACHINING CENTER

2003



MORI SEIKI SH-403 CNC HORIZONTAL MACHINING CENTER



HAAS HRT-450 CNC ROTARY TABLE FITS ON BOTH EC-1600/EC-3000

**Haas EC-3000**, 120" x 40" x 32", 4-Axis Scales, 50 Taper, 30HP, 6,000 RPM, Rotary Table, 2-Speed Gear Drive, CTS, Chip Conveyor, 2006, S/N 51782,

**Haas EC-1600**, 4-Axis w/4-Axis Trunnion Table, w/5-Axis Interface, 64" x 50" x 32", 30 HP, 6,000 RPM, TSC, Linear Scales, CTS, Probe, 2007, S/N 2052155

**Haas HRT-450 CNC Rotary Table**, 18" Cap., 400 Ft. Per Lb. Torque, 999 Max Rotation, 1985

**Mori Seiki SH-403 CNC**, 4-Axis, MSG-501 Control, 22" x 20" x 20", 40 ATC, CT-40 Taper, 12,000 RPM, Mayfran Chip Conveyor, CTS, 2003, S/N 1039

**Are you Considering an Auction?**  
 For a confidential inquiry call Gary at 888-998-4440  
 or email [gt@machinerynetworkauctions.com](mailto:gt@machinerynetworkauctions.com)

PLEASE VISIT OUR WEBSITE FOR MORE DETAILED LISTINGS AND PHOTOS.



# VERTICAL MACHING CENTERS

**Mighty Viper VMC 1600**, Mitsubishi M520 Control, w/4-Axis Interface, 62"x 31"x 23, 32 ATC, 8,400 RPM, CAT-50, 2000, S/N 003065

**Mighty Viper VMC 1500**, Mitsubishi M520 Control, 58"x 28"x 25, 20 ATC, 4,250 RPM, Chip Conveyor, 1997, S/N 901702

**Mighty Viper VMC 850**, Mitsubishi M520 Control, M-Code, 34"x 20"x 20", 20 ATC, CT-40 Taper, 8,000RPM, Chip Conveyor, with Haas Indexer, 2000, S/N 001105

**Mazak AJV 35/80**, Mazatrol M-32 Control, 4-Axis Control, 79"x 31"x 20", 30 ATC, Pallet Shuttle, CT-50 Taper, 30HP, CTS, 1993, S/N 95570

**Mazak AJV 35/80**, Mazatrol M-32 Control, 4-Axis Control, 79"x 31"x 20", 30 ATC, CT-50 Taper, 30HP, 1990, S/N 82923

**Mazak AJV 35/60**, Mazatrol M-32 Control, 4-Axis Control, Dual Pallets, 59"x 31"x 20", 60 ATC, CT-50 Taper, 3,100 RPM, S/N 83638



MIGHTY VIPER VMC 1600 VERTICAL MACHINING CENTER



MIGHTY VIPER VMC 1500 VERTICAL MACHINING CENTER



MIGHTY VIPER VMC 850 VERTICAL MACHINING CENTER



MAZAK AJV 35/60 VERTICAL MACHINING CENTER



MAZAK AJV 35/80 VERTICAL MACHINING CENTER



**121" x 52" Table Travels**

**Mighty Viper B3000**, Mitsubishi Meldas M520 Control, 121"x 52"x 28", 42ATC, CT-50 taper, 30 HP, 4,000 RPM, CTS, 2002, S/N 002554



# TOOLROOM / INSPECTION

Supermax YCI 1-1/2 Vertical Mill

Hermle Horizontal Mill

Feeler FTS-27 2nd Op Lathe

Benzinger Jewelers Lathes

Sheffield Cordax 1808 CMM, DRO, S/N 2-4765-0185

H.E. Check Master CMM, DRO

Paragon RC-12 Centerless Grinder

Christen 2-32 Select-O-Point Tool Grinder

Darex Drill Grinders

Gardner Double Disc Grinder (Not Working)

Do-All Mdl 1612 Vertical Band Saw, S/N 209-671315

Kalamazoo AH9 Horizontal Band Saw

Powermatic Vertical Band Saw

Oliver Mdl 88D Cut-Off Saw

14" Micro Vu Comparator, Mdl. M-14, S/N 3394

20" Nikon V20 Comparator, DRO

Danley Onsrud Pin Router, S/N 782351505

Sunnen MBB-1660 Hone, Tooling Included, S/N 91372

JRI Parts Washer, Mdl. BC-1143, S/N 3880178

Big Joe Lift

Jib Crane

Bulk of Drill Presses

Blanchard Segments

(2) 8" Tsudakoma RNCM-251R CNC Rotary Table, S/N 012252

(2) Haas Rotary Tables w/Control

Haas Indexer

Angle Plates, GE 3.5 Hp Air Dryer, Cat 50 Tooling,

Gun Drill, Ladders, Tombstones, Label Machine,

Drill Presses, H-Frame, Arbor & Kick Presses,

Pedestal Grinders, Belt Sander, Arc Welder, Vibratory Deburrer, Aluminum Blocks & Scrap



BIG JOE LIFT



20" NIKON V20 COMPARATOR



SUNNEN HONE



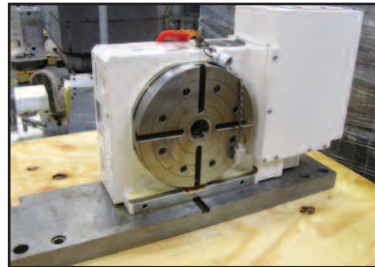
DO-ALL MDL 1612 VERTICAL BAND SAW



PARAGON RC-12 CENTERLESS GRINDER



HAAS ROTARY TABLES



TSUDAKOMA 5TH AXIS TABLE FOR MAZAKS



VIEW OF TOOLING



VIEW OF ALUMINUM REMINENTS



VIEW OF KURT VISES



VIEW OF TOMBSTONES

## TERMS & CONDITIONS

A 15% Buyers Premium Will Apply Onsite. A 18% Buyers Premium Will Apply Online. Unless other satisfactory arrangements are made, a 25% deposit in cash certified or cashier's check payable to Machinery Network Auctions, is required on all purchases. All bidders are required to pay in full within 24 hours of final invoice. Applicable sales tax will be added to the purchase price and the buyer's premium of all taxable items. Everything will be sold "AS IS," "WHERE IS," with no warranties, guarantee or representations, expressed or implied. The Auctioneer and seller expressly and specifically disclaim, without limitation, any warranty of merchantability or fitness for a particular purpose. RIGGING / REMOVAL IS THE RESPONSIBILITY OF THE BIDDER / BUYER. Small carryout items should be removed following the auction or the day after the auction. All removal activity must be in accordance with OSHA guidelines and safety standards. REMOVAL MAY BE BEGIN WHEN THE AUCTION HAS BEEN COMPLETED & PAYMENT IN FULL HAS BEEN MADE.

REMOVAL DEADLINE: Friday, November 22, 2013

**Are you Considering an Auction?**  
For a confidential inquiry call Gary at 888-998-4440  
or email [gt@machinerynetworkauctions.com](mailto:gt@machinerynetworkauctions.com)

ONLINE BIDDING  
AVAILABLE

**BidSpotter.com**

**UPCOMING ONLINE AUCTION** LOCATION: Kent, WA • INSPECTION: Tues., Nov. 19th, 2013

**SURPLUS ASSETS TO THE ONGOING NEEDS OF A MAJOR SUPPLIER TO THE AEROSPACE INDUSTRY**

**FEATURING:** Toyoda 1050 5-Axis HMC, Toyoda FH-80 4-Axis HMC, Kitamura H400 HMC, Makino MC1210 & A55 HMC's, (3) Haas VF-4's, Komo VMC-180, Fadal VMC-4020, (2) Cincinnati Arrow 750 VMC's, Amada HFB 8025 Press Brake, Di-Acro Press Brake, Phase Separation System, Dea CMM, (5) Bridgeports, (2) Haeger Presses, Cranes, Grinders, Welders, Support and More

BIDDING ENDS:

**NOVEMBER**

**20**



# PUBLIC AUCTION

## SURPLUS ASSETS TO THE ONGOING OPERATIONS OF A HIGH PRECISION MANUFACTURER

**LOCATION:** 240 E. Rosecrans Avenue, Gardena, CA

**NOVEMBER**  
**12**  
 2013  
**TUESDAY**  
 10:30 AM PT

**ONSITE & ONLINE AUCTION**

ONLINE BIDDING AVAILABLE **BidSpotter.com**



5.3" HYUNDAI KIA KBN-135 CNC HORIZONTAL BORING MILL

**Attention Plant Manager**

**NAA** Auctioneer  
**CSAA** Certified State Auctioneer  
**NAAB** National Auctioneers Association  
**M·N·A** Machinery Network Auctions  
 Auctioneer, Mark Schustrin, BOND #14-SUR-140246

Scan Here to Register for the Sale!



WWW.MACHINERYNETWORKAUCTIONS.COM

# PUBLIC AUCTION

## SURPLUS ASSETS TO THE ONGOING OPERATIONS OF A HIGH PRECISION MANUFACTURER

**LOCATION:** 240 E. Rosecrans Ave., Gardena, CA • **INSPECTION:** Monday, Nov. 11, 9:00am to 4:00pm ET

**NOVEMBER**  
**12**  
 2013  
**TUESDAY**  
 10:30 AM PT



62.9" HONOR SEIKI VL-160C VERTICAL TURRET LATHE



2007 HAAS EC-1600 HORIZONTAL MACHINING CENTER



2003 MIGHTY VIPER B3000 BRIDGE MILL

**HELP DESK**  
 For Online Registration, Inspection & Transportation,  
 Call Edgar at (888) 998-4440 or email  
[edgar@machinerynetworkauctions.com](mailto:edgar@machinerynetworkauctions.com)

**REMOVAL DATE:**  
 Items Must be Removed by Nov. 22, 2013  
 No Exceptions.

ONLINE BIDDING AVAILABLE  
**BidSpotter.com**